



Infor SyteLine ERP

I discrete manufacturing

FASview™ / FASmail™ File Attachment Tool Custom E-mail Tool



Wouldn't it be nice to . . .

View ALL documents and related information for a particular SyteLine field from WITHIN SyteLine?

Quickly compose an e-mail containing data from any SyteLine screen without cutting and pasting?

Link virtually unlimited file types (i.e., Microsoft application files, CAD drawings, etc.) to SyteLine for quick and easy reference and trouble-shooting?

Configure SyteLine fields to "automatically" link files that would follow that field value wherever it is used throughout the entire system or be included as an attachment to an email?

About FASview™

FASview is a productivity tool that allows you to view external files from within SyteLine by attaching documents to specific SyteLine field values. FASview allows you to attach an unlimited number of Windows-supported document files to any field, wild-carded field or combination of fields that is displayed on a Infor ERP SyteLine screen. Supported file types include, but are not limited to, Microsoft Word, Excel, PowerPoint, CAD drawings, videos, html, etc.

FASview provides built-in flexibility to manually attach files or automate the process. You choose which approach – or use a combination of the two – to meet the needs of your business environment and how your business documents are organized. Having both attachment options available allows the organization to maintain a standard file storage directory structure while at the same time provide the end-user flexibility to manually attach files as needed to support their specific job function.

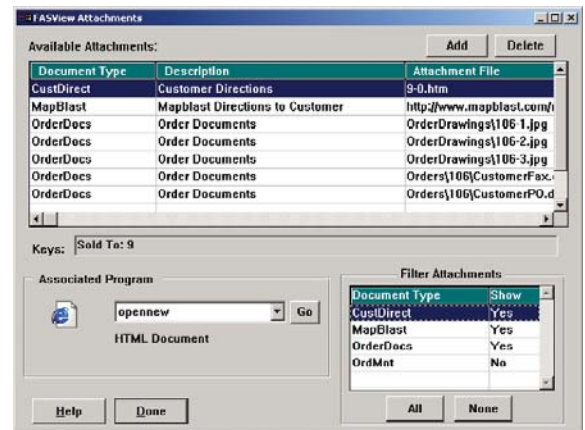
The real power of FASview is in automating the file attachment process. Automated file attachment links are set up via user-definable naming conventions (i.e., "co-num") and a predefined directory structure. Files may be stored anywhere on the network or on any server accessible to the network.

This approach creates automatic links between the attachment files and the predefined SyteLine field name(s) thus eliminating the need to manually attach each document to each SyteLine screen. For example, if a CAD drawing is linked to "item", the CAD drawing can be displayed from any screen where "item" is displayed (i.e., customer order line item maintenance, job maintenance, job materials, purchase order item) allowing the linkage to go throughout the entire SyteLine system.

Available Attachments:

From within any Syteline screen, using a standard Hot-Key, a browser will appear that contains all of the documents that have been attached either manually or through the automated process.

To view the document, simply double-click on the file name.



I discrete manufacturing

Infor takes pride in the 20 years of experience we have in the manufacturing industry. Using our deep base of industry knowledge and proven communications and planning applications, we help suppliers and manufacturers achieve their business goals.

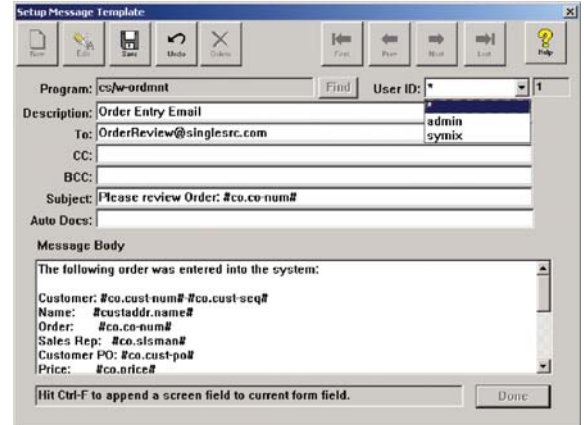
We are passionately focused on providing comprehensive solutions that meet the unique challenges of the manufacturing industry on a global scale. Our solutions are comprehensive, open and modular, giving you the optimal choices to meet today's challenges and leverage tomorrow's opportunities.

About FASmail™

FASmail is a productivity tool that allows you to create customized e-mails for any screen within Frontstep Syteline. E-mails generated by FASmail can contain any information from the current screen as well as related information not available on the screen. FASmail provides the ability to set up e-mail templates by user, group, or system-wide, allowing individual users to set up their own e-mails to facilitate their specific job function(s) and/or share them with their workgroup or the entire company.

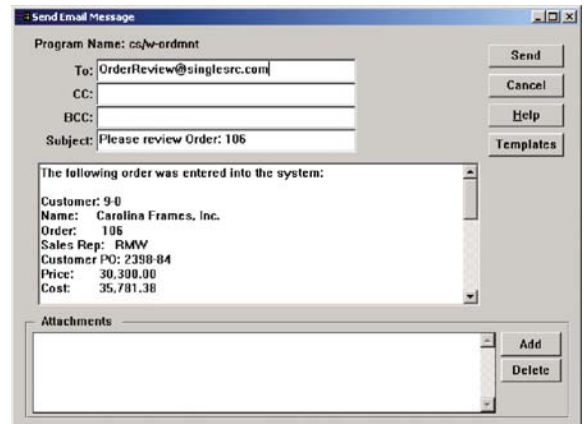
Template E-mails:

Set up unlimited templates on each screen. Set the message to be available to a specific user, group, or system wide. Fill in any field on the screen with parameters to be replaced at run-time such as Customer Name, Order Amounts, Notes, etc. Template fields can be populated with any data from the associated SyteLine screen.



Sending an E-mail:

From within any Syteline screen, using a standard Hot-Key, the user will be given a list of e-mails that have been set up and are available to use from the screen. After the template has been selected, it will automatically be filled in with the appropriate information and the user will be given a chance to customize the e-mail before sending it.



The FASview/FASmail software works with your standard SyteLine system. If you have SyteLine Version 5 or greater, adding this productivity tool will streamline operations and increase employee efficiencies. FASmail is compatible with both MAPI and SMTP e-mail protocols which means it can be used with most of the popular e-mail services such as Exchange, Lotus Notes, Unix mail, etc.



13560 Morris Rd.
Suite 4100
Alpharetta, GA 30004
1-800-260-2640

www.infor.com